

NEW TOOL



Angled Finger Belt Sander DF-FBS20

Unique angled arm gives you more contact area on the work surface!

The DF-FBS20 Angled Finger Sander gives you more contact area on the work surface compared to a straight arm finger sander. A specially designed arm, position at the perfect angle, allows for more hand clearance and the finger sander to lay flatter against the surface. The result is a more complete sanding and smoother surface. A light compact design and adjustable speed motor gives the technician more control. A 9", 229mm length arm helps it get into deeper, hard to reach areas. A removable arm guide allows the user to sand a specified distance from edges, flanges and corners. The arm rotates 360° to allow access into tight areas, and to fold the tool in half for storing.

APPLICATION

Designed to lay flat on a panel while sanding and to reach areas with limited access or maneuverability. General automotive sanding.

FEATURE & BENEFITS

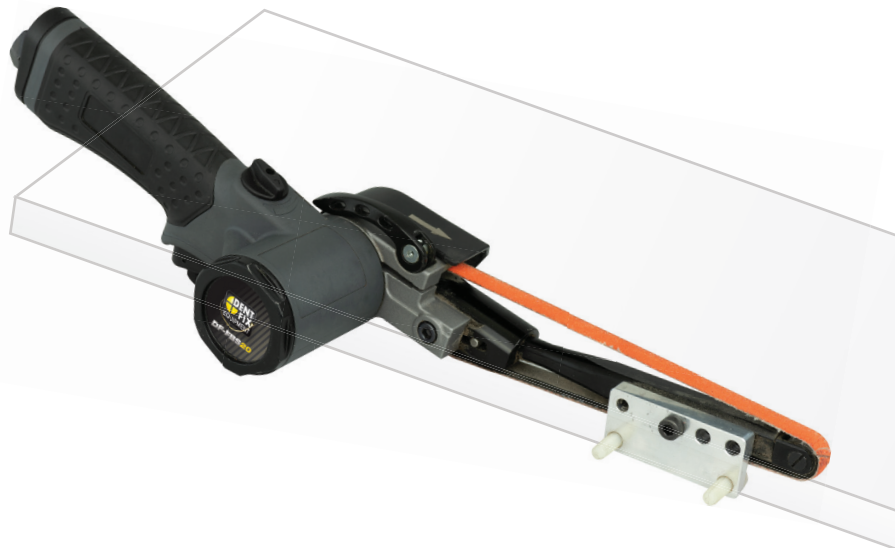
- ANGLED ARM - Flatter and smoother surfaces with less imperfections.
- ARM ROTATES - 360° of articulation allows for the best approach in tight spaces and tool storage in smaller areas.
- SPEED CONTROL- Allows you to adjust the RPM according to the job.
- REMOVABLE ARM GUIDE - Sand a specified distance from the edge or remove completely.

SPECIFICATIONS

MOTOR: PNEUMATIC
PSI: 90 PSI
ARM LENGTH: 9"
BELT SIZE: 10mmx229mm
ARM ROTATION: 360°

CONSUMABLES

Belt Sander Paper



CAPABILITIES



LAYS FLAT ON SURFACE



REMOVE ARM GUIDE



360° ROTATION / FOLDS

STORAGE

Disengage the arm lock to rotate the arm into a foldable position for convenient storage. Best practice is to store in cool, dry location like a toolbox, drawer, or cabinet.

\$ MSRP
\$349

i MORE INFO
Visit us at
www.DENTFIX.com
info@dentfix.com

**STEEL
REPAIR**



Specifications Subject to
Change Without Notice